



**XLT**

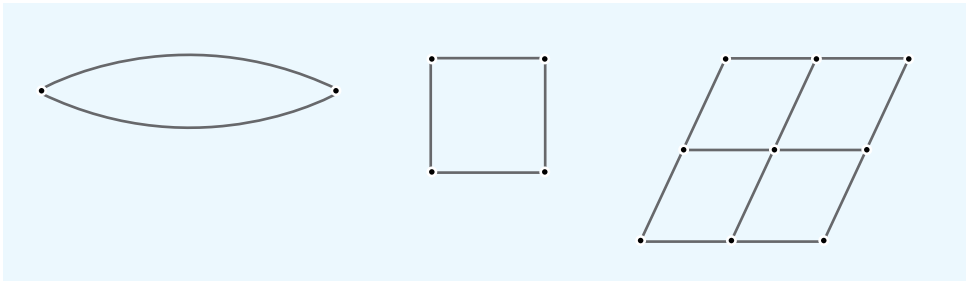
The XLT is a mechanical connector for the Altima track. It can be used to construct a wide variety of shapes.

The XLT can be surface-mounted to either walls of ceilings.



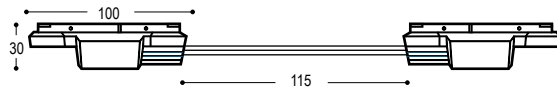
- LV.XLT.0100.50      Black
- LV.XLT.0100.57      White

**Grid Options**



**Track Coupler/ Double Powerfeed**

- LV.PCD.0115.50      Black
- LV.PCD.0115.57      White



- LV.PCD.1000.50      Black
- LV.PCD.1000.57      White

